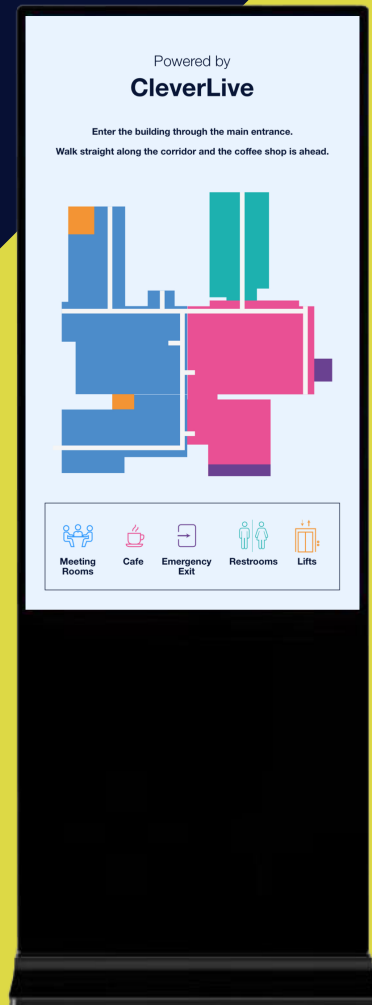
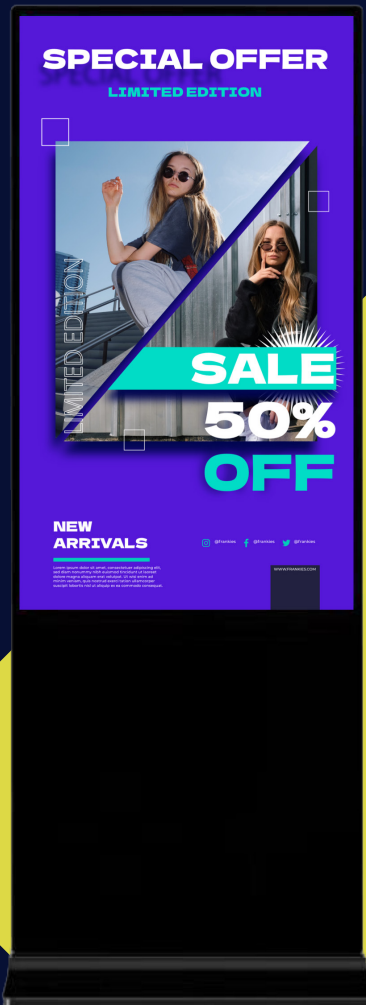
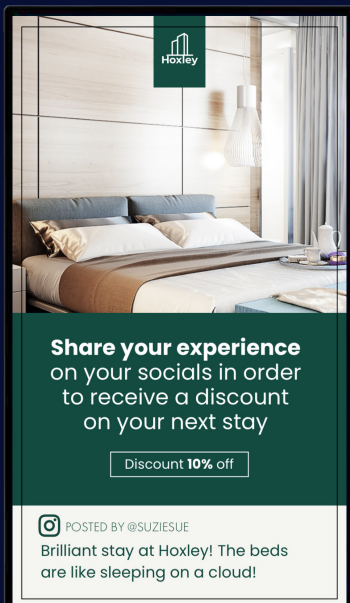


CM Totem

The ultimate freestanding commercial display, designed to revolutionise customer engagement and wayfinding.

Its sleek and ultra-slim design makes it a captivating addition to any retail, hospitality or enterprise environment. Utilise its full-screen display to showcase vibrant and dynamic images and videos that leave a lasting impact on customers.



Available in a range of sizes
49" | 55"



Subscription free feature rich digital signage.

Create your account today at cleverlive.com

Key Features



Digital Signage Full Screen
Posters & Videos



In-built QR code
functionality



Android Technology



One Touch Messaging &
Broadcasting



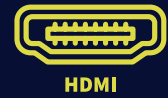
Power Management
Scheduling



Ultra-slim, sleek modern
design



24/7 Usage



HDMI In

Enhance your solution



Take your Totem to the next level - upgrade to fully multizone signage by adding a Pico XI media player within the cabinet. Display promotional offers, wayfinding maps, or social media feeds and more, across multiple zones to create a truly dynamic and tailored experience.



CM Totem Specifications

Panel

Screen size	49" 55"
Panel Type	a-Si TFT-LCD
Active Area	1080:1920
Resolution	1920 x 1080
Brightness	350 Nits
Contrast Ratio	1200:1
Viewing Angle	89/89/89/89
LED Life Time	50,000Hr
Weight	49" 43kg 55" 49kg

Motherboard

Operation System	Android 11
CPU	Quad-core 64-bit Cortex-A55, up to 2.0Ghz RK3568
Memory	2G
Storage	16G
Network	Wifi, RJ45
I/O Ports	USB 2.0 x2, , RJ45 x1, HDMI In x1, earphone port x1 Standard MicroSD Card Slot x1 (Support Max 128G)
Speakers	5W x2

Environmental Conditions

Operating System	0°C - 50°C
Storage System	-20°C - -60°C

Power

Power Supply	96 - 220 V
Rated Frequency	50/60Hz

Installation

The installation of this product should be completed by a qualified installer. Use of components not supplied by Clevertouch or not meeting minimum specifications may impact performance, safety and warranty. For more information, visit clevertouch.com

Support

For all Clevertouch products, visit: support.clevertouch.com

Warranty

Warranty term and upgrade options vary by region. Contact your local reseller or distributor for information and visit clevertouch.com/about/warranty

Compliance & Certification

Regulatory Certification	
--------------------------	--

Statement

Size and weight vary by configuration and manufacturing process, please refer to the actual product. The product images are for illustrative purposes only and may slightly differ in appearance, colour, size, etc. from the actual product. The description, illustrations, etc. in this document may be subject to change in accordance with the latest product specification and performance. Should the above-mentioned change in the document become necessary, the document may be updated without written notice.



Exclusive distributor of Clevertouch for Sub-Saharan Africa

info@ias-av.com . www.ias-av.com