

BUSINESS PROJECTORS







EB-E500/W06/W51/FH52/972/982W/X500/X51

EPSON
EXCEED YOUR VISION



**SURPASS
EXPECTATIONS
BEYOND
VALUES.**

Get the most value for your money with Epson business projectors! These projectors are designed to be your choice regardless if they are used in a corporate setting or in the educational field. With your convenience in mind, you can now project your content wirelessly¹ from compatible smart devices without any additional software installation. Now you are able to showcase your content crisp and clear on large screens.

- 
12,000 Hours Lamp Life in Eco Mode²
- 
Split Screen
- 
Auto Vertical Keystone
- 
Horizontal Keystone Slider³
- 
iProjection
- 
Cost Effective



EB-W06/E500/X500



EB-W51/X51



EB-FH52



EB-972/982W



IT'S IN THE DETAILS.

3LCD technology that delivers quality projected images and reliable performance.

¹ For selected models only. ² Up to 17,000 hours lamp life in Eco Mode for EB-972 & EB-982W. ³ Except EB-E500.



Enhance the Classroom Experience with **Expressive Projections**

Engage the young minds with expressive and vivid projections in class with Epson's XGA projectors. The outstanding flexibility and portability makes it easy for you to install it anywhere in the classroom without additional hassle. Now you can capture and retain students attention to achieve maximum concentration.



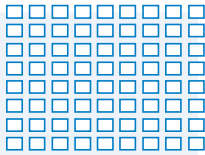
EB-E500/X500

Compelling Projection

Bring images to life in the classroom with Epson's XGA resolution projectors. Projecting up to 3,600 lm brightness*, you can now present your materials to the class with brighter pictures in better colours and contrasts. Leave a more convincing and stronger presentation to your peers and students with Epson's projectors today.

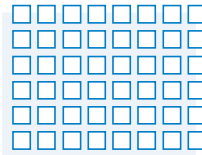
* Brightness for EB-E500 is 3,300 lm.

XGA Resolution
1024 x 768



Sharper, detailed images

SVGA Resolution
800 x 600

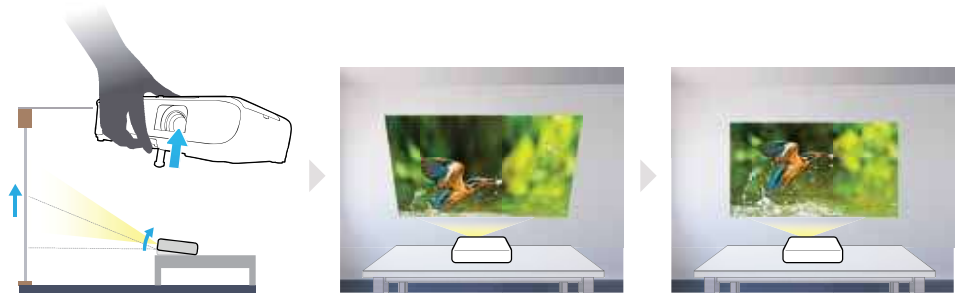


Loss of details

Auto Vertical Keystone

Except EB-E500

Saving setup time, Auto Vertical Keystone automatically detects and corrects image distortion when the foot lever is used to adjust the height of a projected image.



Horizontal Keystone Slider

Except EB-E500

With the easy-to-use sliding Horizontal Keystone Slider, screen corrections can be done quickly, easily, and accurately, even in a limited space.



Optical Zoom

Except EB-E500

Optical zoom provides the flexibility to adjust the projector's installation location while still maintaining the desired picture size and quality.



Easy Maintenance and Longer Lamp Life

A long lamp life reduces maintenance and costs. The lamp will last up to 12,000 hours in ECO mode. Cut down on the frequency of lamp replacements, saving you time and money, and lowering the total cost of ownership.



MODEL NUMBER	EB-E500	
Projection Technology	RGB liquid crystal shutter projection system (3LCD)	
Specifications of Main Parts		
LCD	Size	0.55" (C2fine)
	Native Resolution	XGA (1024 x 768)
Lightsource	Type	210W UHE
	Life (Normal / Eco)	6,000 / 12,000 hours
Aspect Ratio	4:3	
Projection Lens	Type	No Optical Zoom / Focus (Manual)
	F-Number	1.44
	Focal Length	16.70 mm
	Zoom Ratio	1.00 – 1.35 (Digital Zoom)
	Throw Ratio	1.44 - 1.95 (Wide to Tele)
	Screen Size (Projected Distance)	
Standard	Tele: 22" to 259" [0.87 to 10.34 m]	
	Wide: 30" to 350" [0.87 to 10.34 m]	
Brightness¹		
White Light Output (Normal / Extended)	3,300 lm	
Colour Light Output	3,300 lm	
Contrast Ratio	15,000:1	
Geometric Correction		
Vertical / Horizontal Keystone	±30° / ±30°	
Quick Corner	Yes	
Split Screen	Yes	
Internal Speakers	Monoaural: 2W x 1	
Connectivity		
Analog Input	D-Sub 15Pin	1
	Composite	NA
Digital Input	DVI-D	NA
	HDMI	1
	HDBaseT	NA
Output Terminal	D-Sub 15Pin	NA
	HDMI	NA
Audio Input	2RCA	NA
Audio Output	Stereo Mini Jack	NA
Others	USB Type A	NA
	USB Type B	1 (For Firmware Update, Copy OSD Settings)
Control I/O	RS-232C	NA
	Remote Control Input	NA
Network	Wired LAN	NA
	Wireless	NA
Operating Temperature	Low Altitude: 5 – 40 °C <41 – 104 °F> High Altitude: 5 – 35 °C <41 – 95 °F> (20% – 80% Humidity, No Condensation)	
Operating Altitude	0 – 3,048 m <0 – 10,000 ft>	
Direct Power On / Off	Yes	
Start-Up Period	Up to 6 seconds, Warm-up Period: 30 seconds	
Cool Down Period	Instant Off	
Air Filter		
Type	High Efficiency Filter	
Maintenance Cycle (Normal / Eco)	6,000 / 12,000 hours ³	
Power Supply Voltage	100 - 240 V AC ±10%, 50/60 Hz	
Power Consumption (220 - 240V)		
Lamp (Normal / Eco)	327W / 225W	
Standby (Energy Saving)	0.3 W	
Dimension Excluding Feet (D X W X H)	234 x 302 x 77 mm	
Weight (Including Standard Lens)	Approx. 2.4 kg	
Fan Noise (Normal / Quiet)	37dB / 28dB	

EB-E500

Supplied Accessories

Power Cable (1.8m)
HDMI Cable (1.8m)
Remote control with 2AA Battery
User's Manual CDROM
Quick Start Guide

Optional Accessories

Spare Lamp: ELPLP97
Air Filter: ELPAF32
Ceiling Mount: ELPMB23
Carry Case: ELPKS69



EB-E500

©2020 Epson Singapore Pte Ltd. All Rights Reserved. Reproduction in part or in whole, without the written permission from Epson, is strictly prohibited.

EPSON and EXCEED YOUR VISION are registered trademarks of Seiko Epson Corporation.

All other product names and other company names used herein are for identification purposes only and are the trademarks or registered trademarks of their respective owners.

Epson disclaims any and all rights in those marks. Projected images shown herein are simulations. The actual product design and contents may vary. Specifications are subject to change without notice and may vary between countries. Please check with local Epson offices for more information.

Apple, iPad and iPhone are trademarks of Apple Inc., registered in the U.S. and other countries. App Store is a service mark of Apple Inc.

Android is a trademark of Google Inc.

Dealer's Stamp

¹ Colour brightness (colour light output) and white brightness (white light output) will vary depending on usage conditions. Colour light output measured in accordance with IDMS 15:4; white light output measured in accordance with ISO 21118.

² Maximum speed and range is achievable when used with same enhanced mode technology. Actual data rates, features and performance may vary depending on your computer system, the environment and other factors.

³ When used in the general office environment (the amount of floating dust: 0.04 - 0.2 mg/m³). Based on the Epson's in-house test results.

Information correct at time of printing.
Printed March 2020

Call Centre
1-500-766



Informasi lebih lanjut, kunjungi www.epson.co.id/projectors atau Tel. 1-500-766

PT Epson Indonesia
Epson Sales & Service
(Showroom)

Cibis Tower 9, 3rd Floor, CIBIS Business Park, Jalan TB Simatupang No.2, Jakarta 12560 Tel: (021) 808-66-766 Fax: (021) 808-66-799
Bandung (022) 4207033 **Batam** (0778) 4807668 **Bogor** (0251) 8310026 **Cikarang** (021) 89844301 **Denpasar** (0361) 9348428 **Jakarta - Mangga Dua Mall** (021) 62301104
Jakarta - Wisma Keiai (021) 5724335 **Jakarta - Cibis Nine** (021) 80866777 **Makassar** (0411) 8911071 **Manado** (0431) 8805896 **Palu** (0451) 8448597 **Purwokerto** (0281) 6512213 **Semarang** (024) 8313807 **Serpong** (021) 53151229 **Surabaya - Gubeng** (031) 99446377 **Surabaya - Barat** (031) 51201994

Epson Service Center

Ambon (0911) 3835864 **Banjarmasin** (0511) 3266321 **Cirebon** (0231) 8800846 **Jember** (0331) 488373 **Madiun** (0351) 4770248 **Medan** (061) 42066090/42066091
Palembang (0711) 311330 **Pekanbaru** (0761) 8524695 **Pontianak** (0561) 735507/767049 **Samarinda** (0541) 7272904 **Serang** (0254) 7912503 **Yogyakarta** (0274) 581065